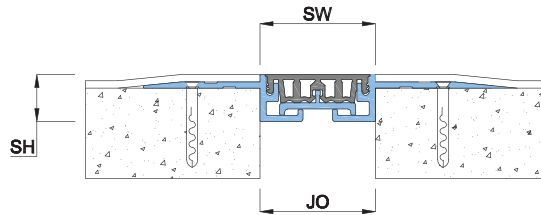
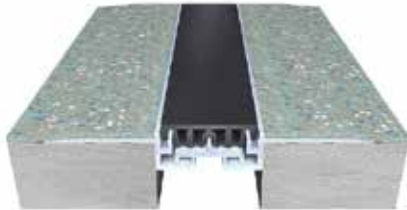


Features

- Surface mounted system designed for retrofit installation
- Firmly fixed Santoprene gasket ideal for movement tractability without shearing or breaking
- System suitable for minor seismic movements
- Commonly used system that is easy to install and maintain
- Allows narrow shear movement
- Suitable for heavy pedestrian traffic and hand trolley loads
- Vapor and Fire Barriers are optionally available
- Installation is recommended for PVC / VCT / LVT / Rubber floor finishes

Straight Application AES



AE
Series

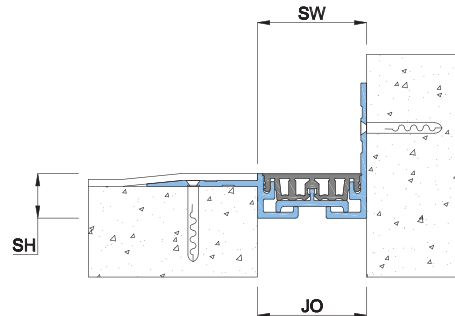
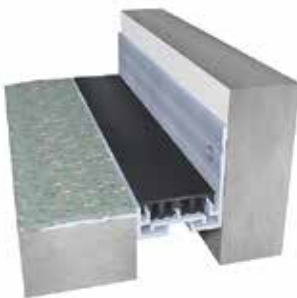
INT.
Application

Thermal
Movement

FLOOR
USE

WALL
USE

Corner Application AEC



Seal
Colors:

BK

BG

WH

GY

Details

Usage : Floor/Wall

Joint width : 1" - 3"

Optional : Vapor/Fire Barrier

Application	Code	JO	SH	SW	± Movement (%)			Load (Ton)
					Horizontal	Vertical	Shear	
Straight (S)	AES 01	25	11	25	25	25	Narrow	3
	AES 02	51	19	51	25	25	Narrow	2
	AES 03	76	21	76	25	25	Narrow	2
Corner (C)	AEC 01	25	11	25	25	25	Narrow	3
	AEC 02	51	19	51	25	25	Narrow	2
	AEC 03	76	21	76	25	25	Narrow	2

As Prospec Specialties' policy is one of continual progress for the improvement of the company's services to its customers, the company reserves the right to modify the specifications of its products without notice.