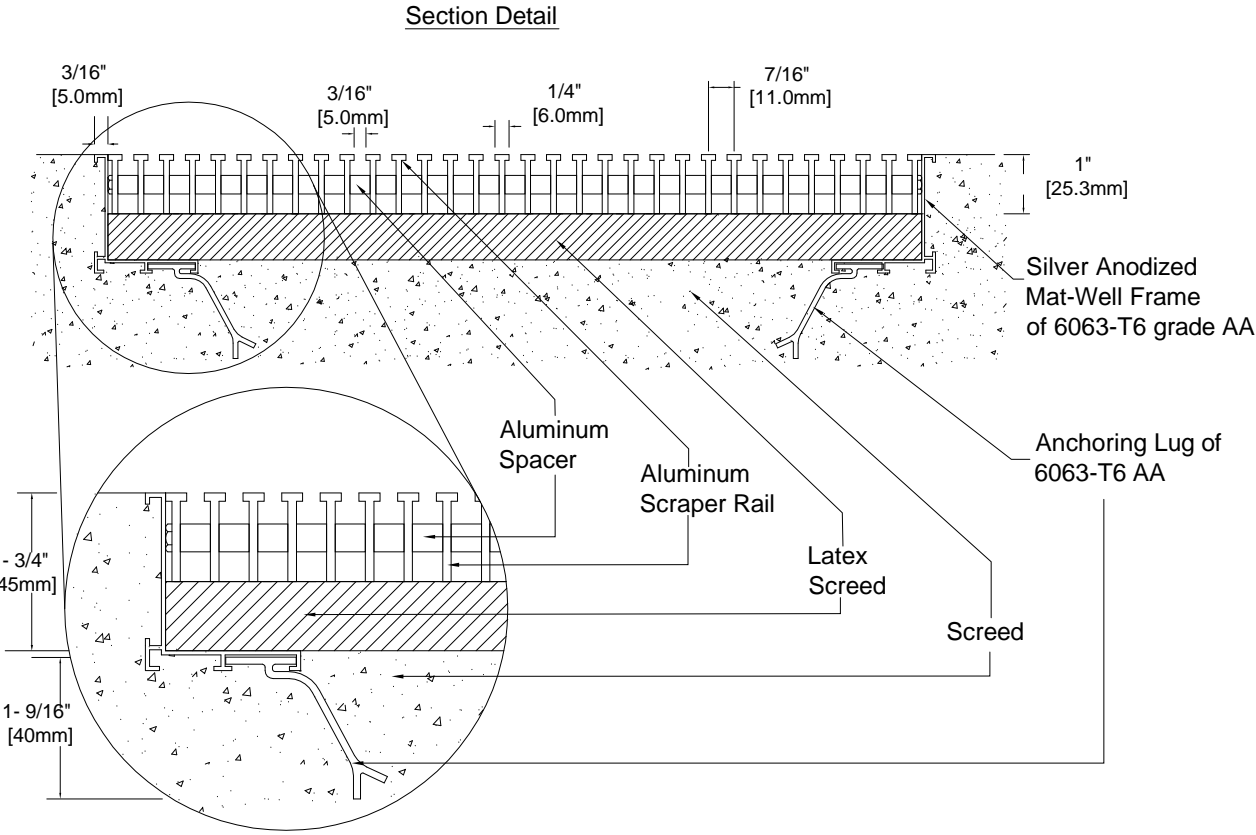
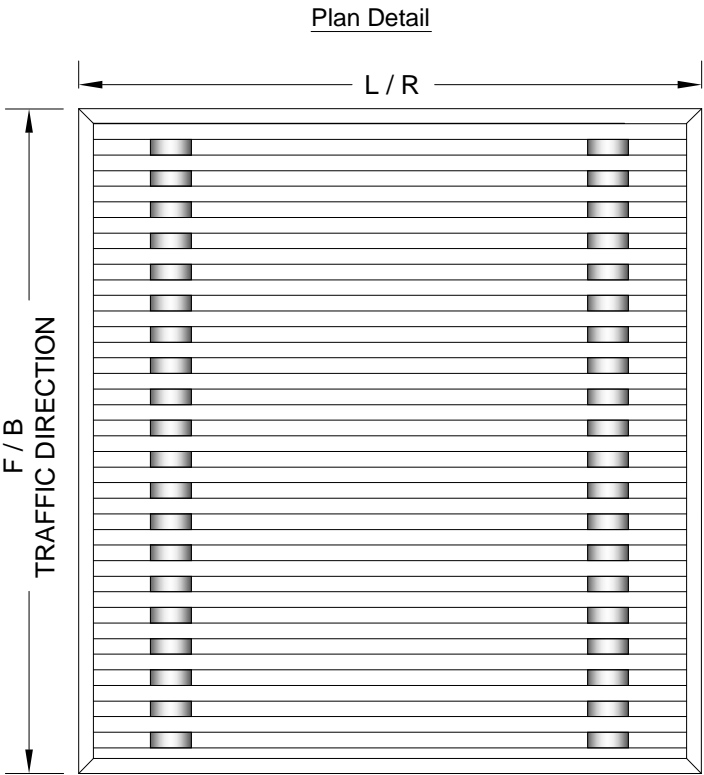


LEVEL BASE FRAME INSTALLATION



DETAIL NOTES:

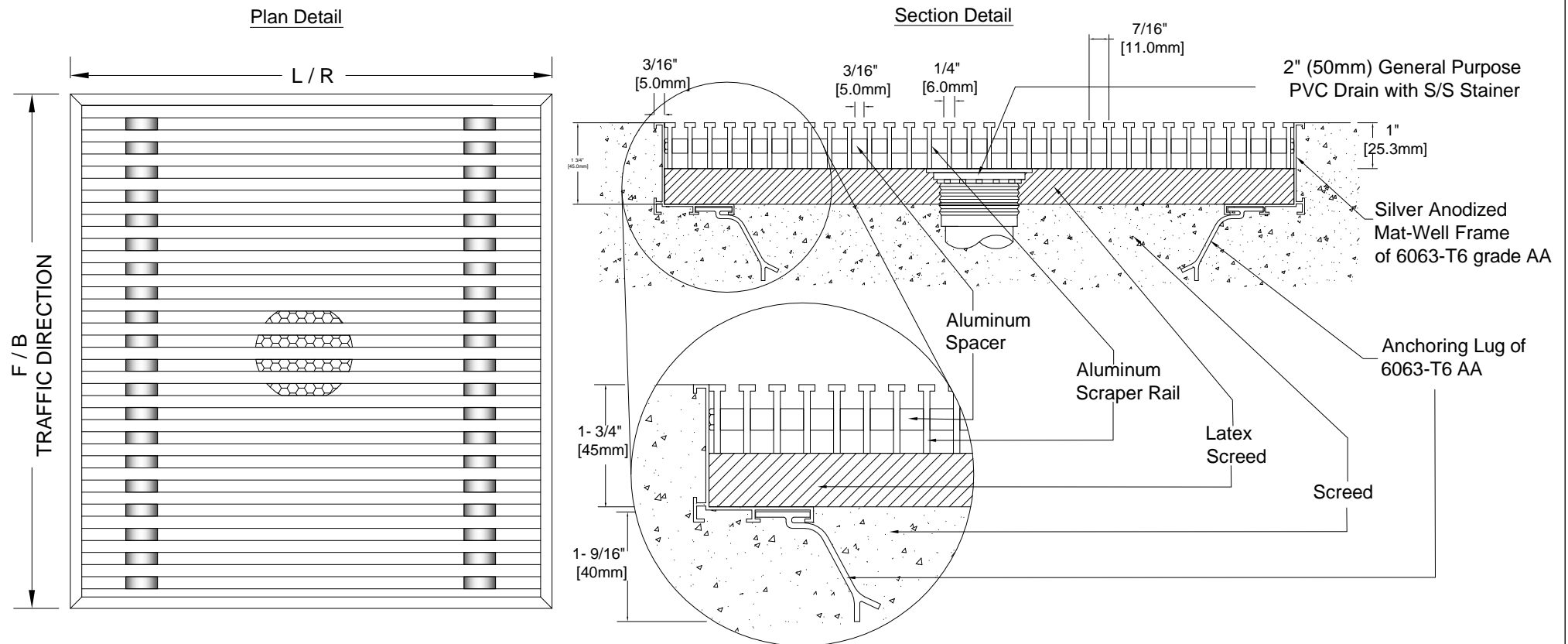
- 1 - Mat Scrapers must run perpendicular to traffic direction.
- 2 - Scrapers available in Alum.
- 3 - Mat-Well frames available upon request.
- 4 - Installation to be completed in accordance with manufacturer's specifications.
- 5 - All Dimensions are considered true and reflect manufacturer's specifications.
- 6 - Do not scale drawing.
- 7 - Maximum single grid size not to exceed 4-1/6'(1270mm)left to right X 4-1/6'(1270mm)front to back
- 8 - Weight 53 lbs per Square Meter.
- 9 - Max static load 2800 lbs per sq.in.
- 10 - Dynamic load 2800 lbs [two wheels of 2"(50.8mm)]
- 11 - All surfaces in contact with masonry are to receive a coat of Zinc Chromate Premier.

PROJECT:		DRAWN BY : SJ	
CONSULTANT:	MATTING CODE :	CHECKED BY :	
INTERIOR DESIGN:	OFFER NO:	SCALE : NTS	




3601 HIGHWAY 7, SUITE 400
MARKHAM ON L3R 0M3, CANADA

LEVEL BASE FRAME WITH DRAIN INSTALLATION

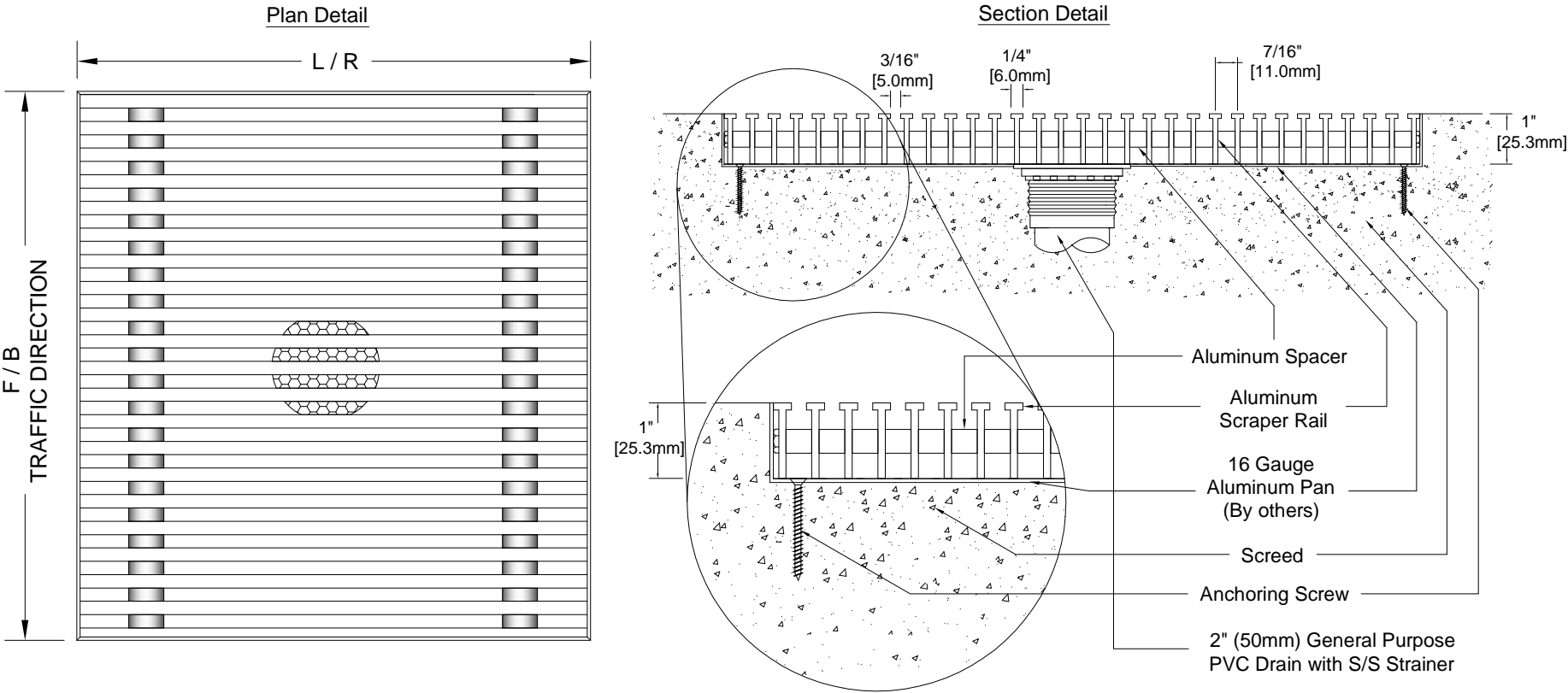


DETAIL NOTES:

- 1 - Mat Scrapers must run perpendicular to traffic direction.
- 2 - Scrapers available in Alum.
- 3 - Mat-Well frames available upon request.
- 4 - Installation to be completed in accordance with manufacturer's specifications.
- 5 - All Dimensions are considered true and reflect manufacturer's specifications.
- 6 - Do not scale drawing.
- 7 - Maximum single grid size not to exceed 4'-1/6" (1270mm) left to right X 4'-1/6" (1270mm) front to back
- 8 - Weight 53 lbs per Square Meter.
- 9 - Max static load 2800 lbs per sq.in.
- 10 - Dynamic load 2800 lbs [two wheels of 2" (50.8mm)]
- 11 - All surfaces in contact with masonry are to receive a coat of Zinc Chromate Premier.

PROJECT:		DRAWN BY : SJ	 PROSPEC SPECIALTIES 3601 HIGHWAY 7, SUITE 400 MARKHAM ON L3R 0M3, CANADA
CONSULTANT:	MATTING CODE :	CHECKED BY :	
INTERIOR DESIGN:	OFFER NO:	SCALE : NTS	


LEVEL BASE FRAME WITH DRAIN AND PAN INSTALLATION



DETAIL NOTES:

- 1 - Mat Scrapers must run perpendicular to traffic direction.
- 2 - Scrapers available in Alum.
- 3 - Mat-Well frames available upon request.
- 4 - Installation to be completed in accordance with manufacturer's specifications.
- 5 - All Dimensions are considered true and reflect manufacturer's specifications.
- 6 - Do not scale drawing.
- 7 - Maximum single grid size not to exceed 4-1/6'(1270mm)left to right X 4-1/6'(1270mm)front to back
- 8 - Weight 53 lbs per Square Meter.
- 9 - Max static load 2800 lbs per sq.in.
- 10 - Dynamic load 2800 lbs [two wheels of 2"(50.8mm)]
- 11 - All surfaces in contact with masonry are to receive a coat of Zinc Chromate Premier.

PROJECT:		DRAWN BY : SJ	
CONSULTANT:	MATTING CODE :	CHECKED BY :	
INTERIOR DESIGN:	OFFER NO:	SCALE : NTS	



3601 HIGHWAY 7, SUITE 400
MARKHAM ON L3R 0M3, CANADA