



'Cleanex' is rugged, heavy-duty foot grille that is semi-open, roll-able, silent and sustainable. Made of heavy gauge warp resistant aluminum with 4/25" (4mm) profile spacing and EPDM wipers.

'Cleanex' is suitable for Schools, Universities, Hospitals, Hotels, Commercial Buildings, Cinemas, Shopping Malls and Banks.

'Cleanex' semi-open construction allows the dirt to fall thru the mat and remains out of sight collected in the mat-well. The top of the mat always remain clean.

'Cleanex' comes with an array of colored wipers that match most of the interior / exterior colors and settings, thus making it a popular product.

Heavy-duty 'Cleanex' does not break or shear under pressure. 'Cleanex' is sanitized, does not encourage bacterial and fungal growth.

'Cleanex' Mats are roll-able for periodical cleaning and maintenance. Durability and effectiveness ensure low life-cycle costs.

Possible LEED Credits:

- MR Credit 4 (1-2 points)
- MR Credit 5 (1-2 points)
- IEQ Credit 5 (1 point)

Re-cycled Content:

- Post Industrial: 40%
- Post Consumer: 40%

Sample Specification: Provide 19/20" (24mm) thick roll-able, Prospec Specialties 'Cleanex' entrance mat with open construction having grooved rubber wipers fixed on aluminum cassettes alternating with 4/25" (4mm) rubber spacers. Aluminum profiles have EPDM cushion pads for noise reduction and smooth rolling action, complete with WELCOME mat-well frame of anodized aluminum.

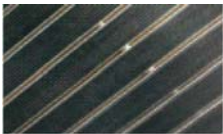
Also available in Standard Sizes with Ramp Frame:

- 2' x 3' (60cm x 90cm)
- 3' x 4' (90cm x 120cm)
- 4' x 5' (120cm x 150cm)

Does not require any on-site dry / wet fixing.
Lay on ground like rugs.



Color Options:



BLACK (BK)

Key Properties:

- 
INTERNAL
- 
EXTERNAL
- 
OPEN
- 
MUD
- 
COARSE
DIRT
- 
EASY TO
MAINTAIN
- 
QUIET
- 
HIGH
HEELS
- 
AESTHETIC
- 
WHEELED
TRAFFIC