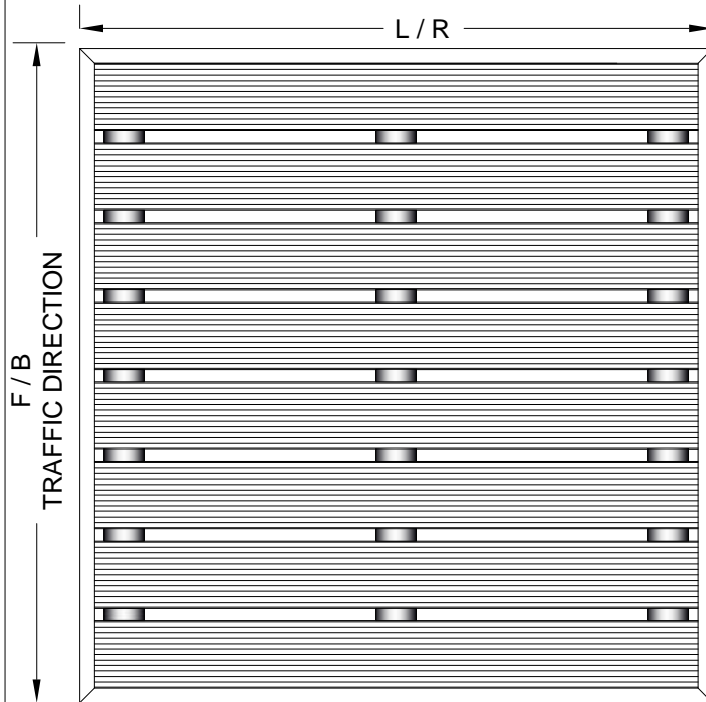
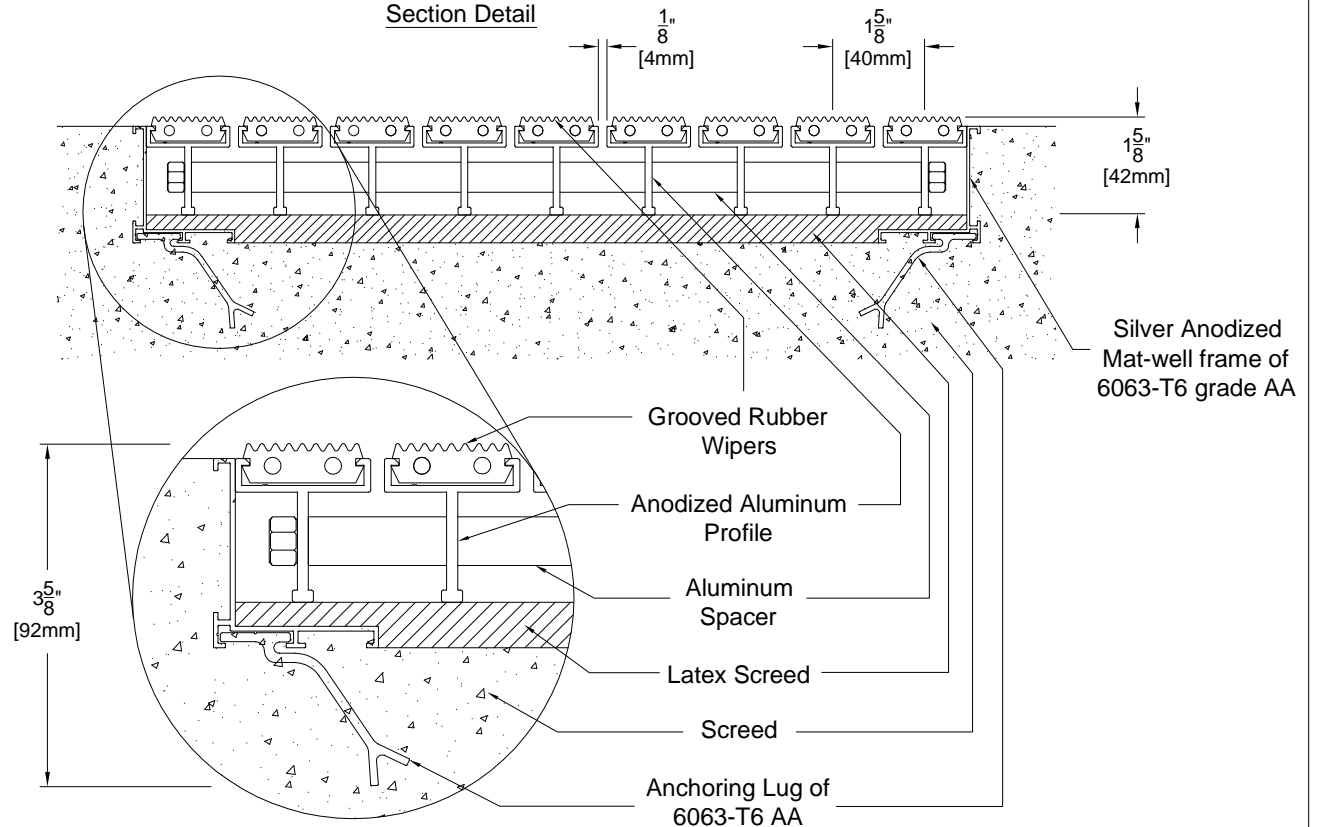


LEVEL BASE FRAME INSTALLATION

Plan Detail



Section Detail



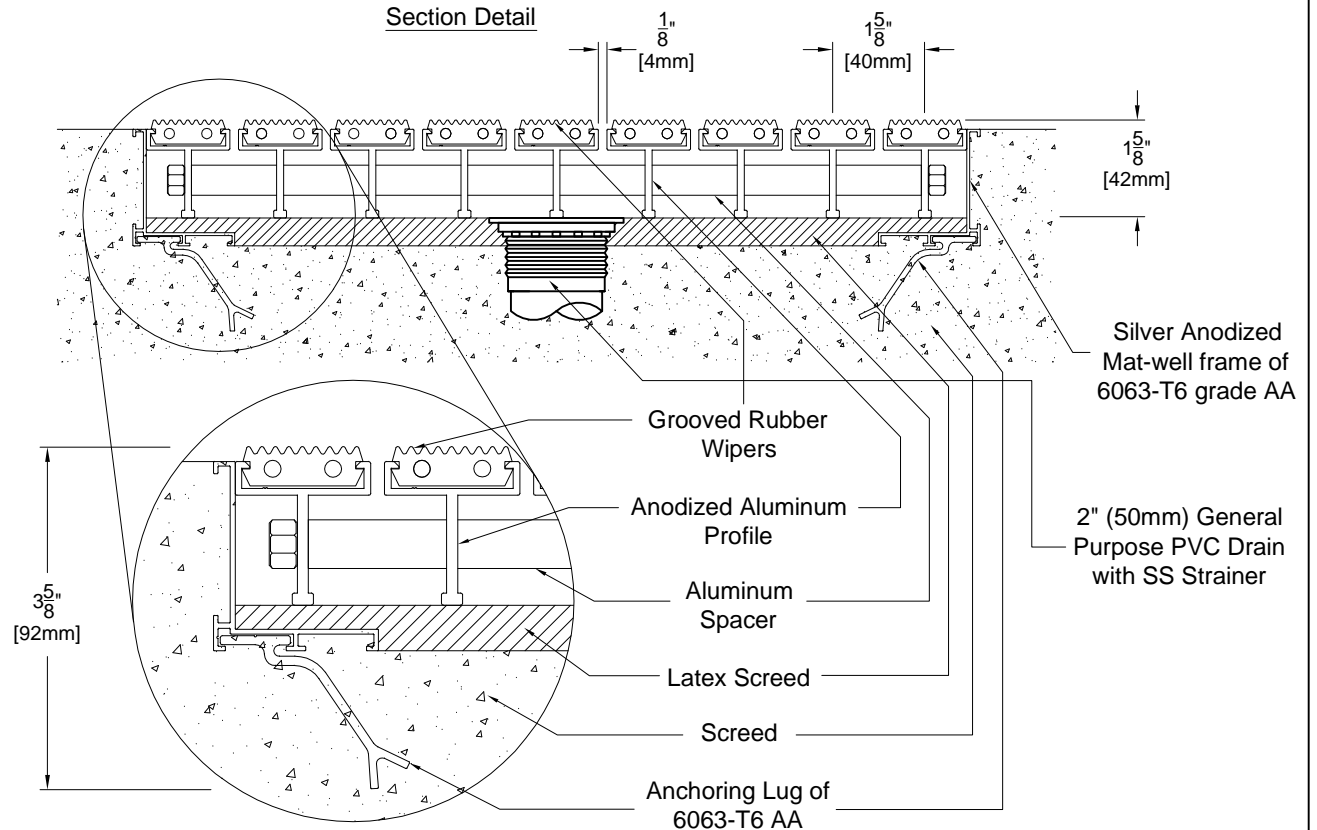
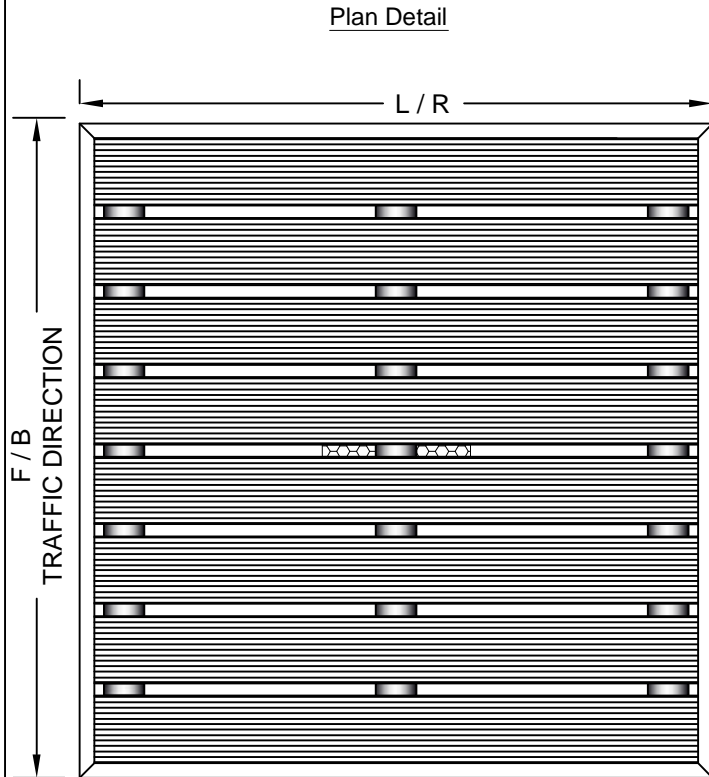
DETAIL NOTES:

- 1 - Mat Wipers must run perpendicular to traffic direction.
- 2 - Wipers are available in Black colour only. Other colours available on special request.
- 3 - Mat-Well frames available upon request.
- 4 - Installation to be completed in accordance with manufacturer's specifications.
- 5 - All Dimensions are considered true and reflect manufacturer's specifications.
- 6 - Do not scale drawing.
- 7 - Maximum single grid size not to exceed 9.84'(3000mm)left to right X 2'(610mm) front to back.
- 8 - Weight 53 lbs per Square Meter.
- 9 - Max load 1500 lbs per sq. ft.
- 10 - All surfaces in contact with masonry are to receive a coat of Zinc Chromate Premier.
- 11 - Bigger grids be created on site by interconnecting small mats.

PROJECT:		DRAWN BY : SJ
CONSULTANT:	MATTING CODE :	CHECKED BY :
INTERIOR DESIGN:	OFFER NO:	SCALE : NTS


PROSPEC SPECIALTIES
 3601 HIGHWAY 7, SUITE 400
 MARKHAM ON L3R 0M3, CANADA

LEVEL BASE FRAME WITH DRAIN INSTALLATION

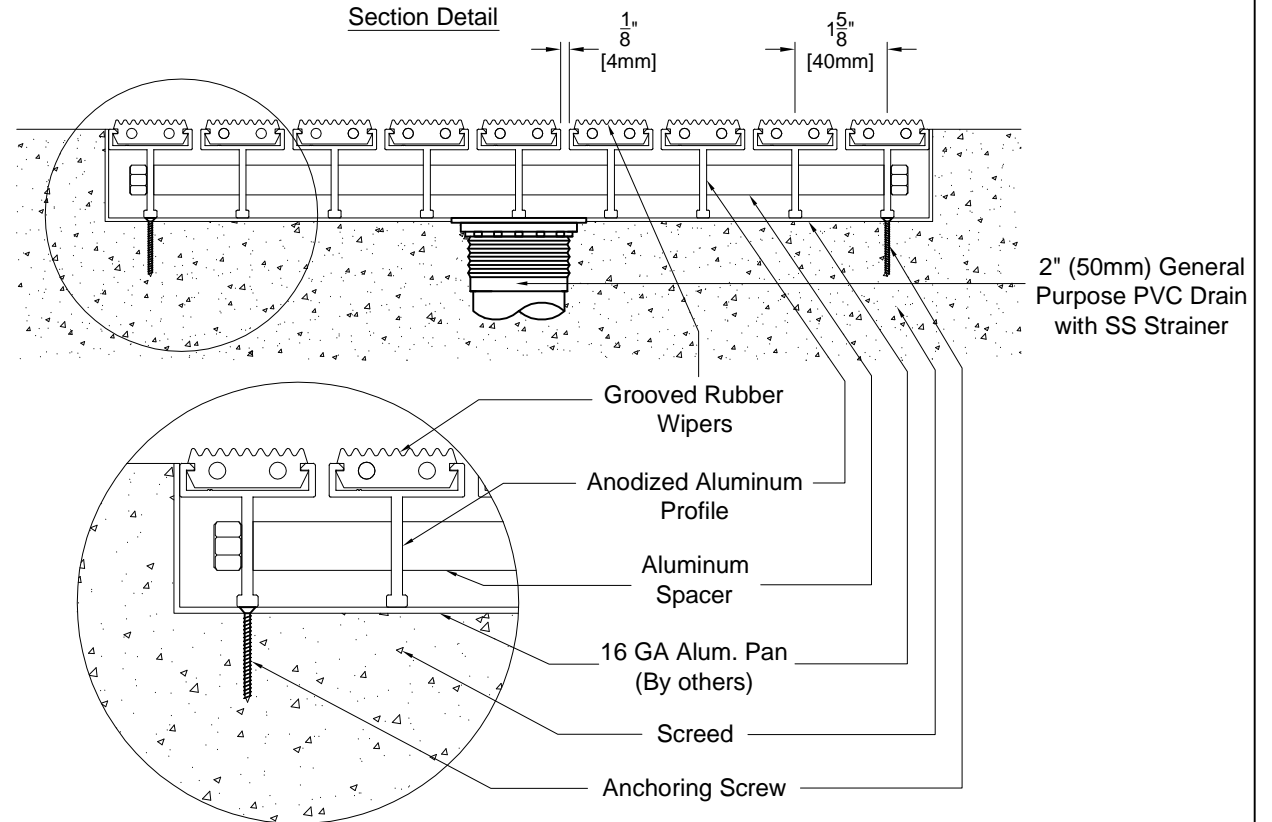
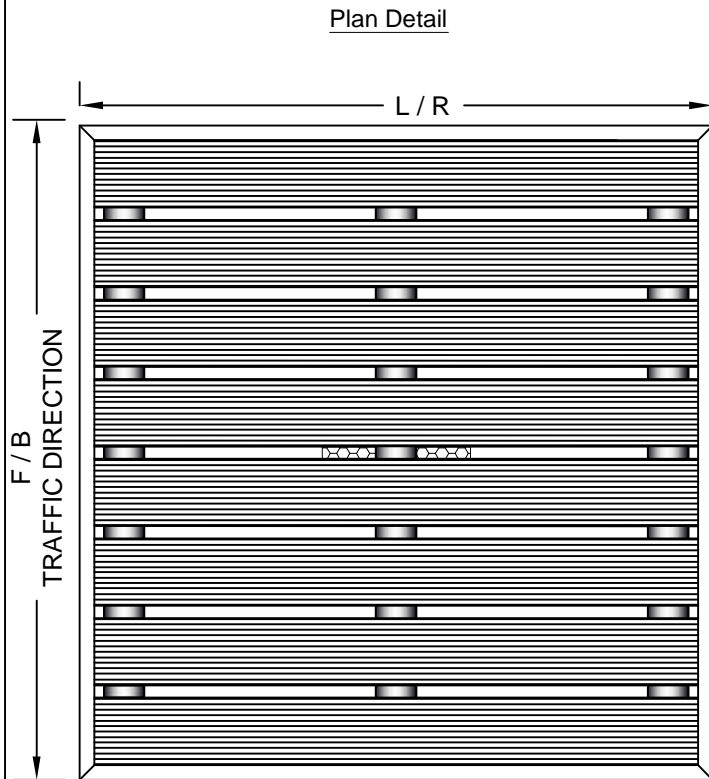


DETAIL NOTES:

- 1 - Mat Wipers must run perpendicular to traffic direction.
- 2 - Wipers are available in Black colour only. Other colours available on special request.
- 3 - Mat-Well frames available upon request.
- 4 - Installation to be completed in accordance with manufacturer's specifications.
- 5 - All Dimensions are considered true and reflect manufacturer's specifications.
- 6 - Do not scale drawing.
- 7 - Maximum single grid size not to exceed 9.84'(3000mm)left to right X 2'(610mm) front to back.
- 8 - Weight 53 lbs per Square Meter.
- 9 - Max load 1500 lbs per sq. ft.
- 10 - All surfaces in contact with masonry are to receive a coat of Zinc Chromate Premier.
- 11 - Bigger grids be created on site by interconnecting small mats.


PROJECT:		DRAWN BY : SJ	 3601 HIGHWAY 7, SUITE 400 MARKHAM ON L3R 0M3, CANADA
CONSULTANT:	MATTING CODE :	CHECKED BY :	
INTERIOR DESIGN:	OFFER NO:	SCALE : NTS	

LEVEL BASE FRAME WITH DRAIN AND PAN INSTALLATION



DETAIL NOTES:

- 1 - Mat Wipers must run perpendicular to traffic direction.
- 2 - Wipers are available in Black colour only. Other colours available on special request.
- 3 - Mat-Well frames available upon request.
- 4 - Installation to be completed in accordance with manufacturer's specifications.
- 5 - All Dimensions are considered true and reflect manufacturer's specifications.
- 6 - Do not scale drawing.
- 7 - Maximum single grid size not to exceed 9.84'(3000mm) left to right X 2'(610mm) front to back.
- 8 - Weight 53 lbs per Square Meter.
- 9 - Max load 1500 lbs per sq. ft.
- 10 - All surfaces in contact with masonry are to receive a coat of Zinc Chromate Premier.
- 11 - Bigger grids be created on site by interconnecting small mats.

PROJECT:		DRAWN BY : SJ	 3601 HIGHWAY 7, SUITE 400 MARKHAM ON L3R 0M3, CANADA
CONSULTANT:	MATTING CODE :	CHECKED BY :	
INTERIOR DESIGN:	OFFER NO:	SCALE : NTS	