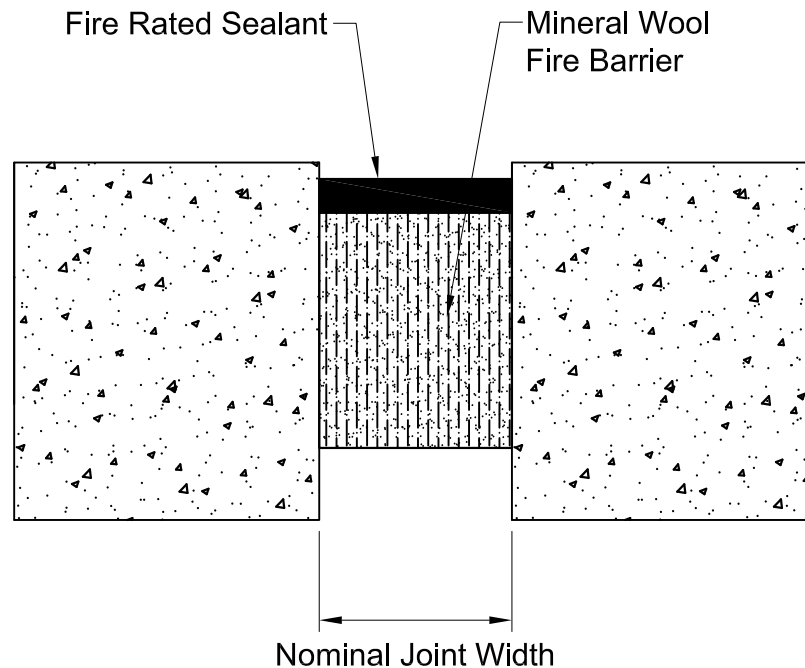


ZB Series



MODEL	Nominal Joint Width (Inch)	Nominal Joint Width (mm)
ZBS 01	1"	(25mm)
ZBS 02	2"	(50mm)
ZBS 03	3"	(75mm)
ZBS 04	4"	(100mm)

Date: Mar., 2014

Scale: NTS

Rev:

Drawn by :

APPLICATION: 2 Hour Rated Fire Barrier
for Floors, Walls & Ceiling



PROSPEC SPECIALTIES INC.

3601 HIGHWAY 7, SUITE 400
MARKHAM ON L3R 0M3, CANADA.
TEL: (888) - 749 - 8456,
FAX: (888) - 749 - 8455
Email: info@prospecspecialties.com
Web: prospecspecialties.com

Disclaimer: As Prospec Specialties' Policy is one of continual technical progress for the improvement of the company's services to its customers, the company reserves the right to modify the Designs of its products without notice.