

Product and Company Identification

Product Name: **HK Series**
 Manufacturer's Name: **Prospec Specialties Inc.**
 Suite 400, 3601, Highway 7,
 Markham ON, L3R 0M3, Canada
 Emergency #: (888) 749-8456
 Date Prepared: June, 2013

Table 1: System Details

Application	Code	JO	SH	SW	WH	± Movement (%)			Load (Ton)
		Millimeter				Horizontal	Vertical	Shear	
Straight (S)	HKS 01	25	10	79	*	50	13	Minor	*
	HKS 02	51	10	117	*	50	13	Minor	*
	HKS 03	76	10	156	*	50	13	Minor	*
	HKS 04	102	10	194	*	50	13	Minor	*
Corner (C)	HKC 01	25	10	44	33	50	13	Minor	*
	HKC 02	51	10	83	33	50	13	Minor	*
	HKC 03	76	10	121	33	50	13	Minor	*
	HKC 04	102	10	159	33	50	13	Minor	*

JO = Joint Opening

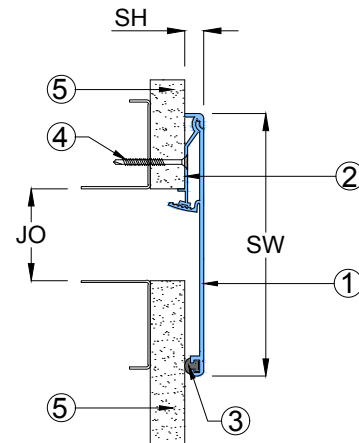
SH = System Height

SW = Sight Width

WH = Wall Height

Key to System Features (Straight Application)

1. Continuous Aluminum Variable Center Plate, Grade 6063-T6
2. Continuous Aluminum Variable Retainer Frame, Grade 6063-T6
3. Extruded Elastomeric Seals
4. Sheet Metal Self Drilling Screw (by others)
5. Drywall (by others)



Key to System Features (Corner Application)

1. Continuous Aluminum Variable Corner Plate, Grade 6063-T6
2. Continuous Aluminum Variable Retainer Frame, Grade 6063-T6
3. Extruded Elastomeric Seal
4. Sheet Metal Self Drilling Screw (by others)
5. Drywall (by others)

