

Product and Company Identification

Product Name: **CB Series**
 Manufacturer's Name: **Prospec Specialties Inc.**
 Suite 400, 3601, Highway 7,
 Markham ON, L3R 0M3, Canada
 Emergency #: (888) 749-8456
 Date Prepared: June, 2013

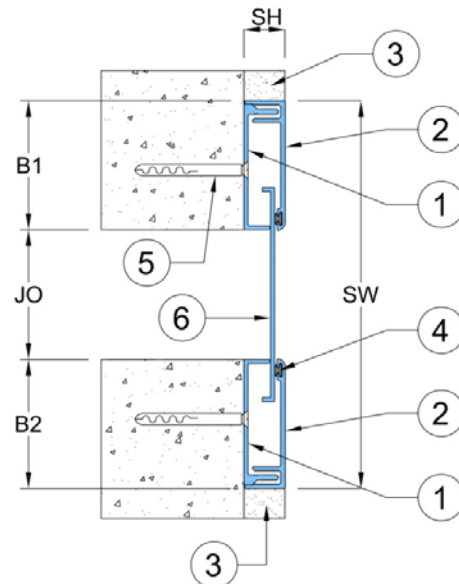
Table 1: System Details

Application	Code	JO	SH	SW	B1	B2	± Movement (%)		
		Millimeter					Horizontal	Vertical	Shear
Straight (S)	CBS 01	25	16	127	51	51	50	25	Excellent
	CBS 02	51	16	152	51	51	50	25	Excellent
	CBS 03	76	16	229	76	76	50	25	Excellent
	CBS 04	102	16	254	76	76	50	25	Excellent
	CBS 06	152	16	357	102	102	50	25	Excellent
Corner (C)	CBC 01	25	16	60	51	51	25	25	Excellent
	CBC 02	51	16	86	51	51	25	25	Excellent
	CBC 03	76	16	137	76	51	25	25	Excellent
	CBC 04	102	16	162	76	51	25	25	Excellent
	CBC 06	152	16	238	102	51	25	25	Excellent

JO = Joint Opening **SH** = System Height **SW** = Sight Width

Key to System Features (Straight Application)

1. Continuous Aluminum Frame
Grade 6063-T6
2. Continuous Aluminum Cover
Grade 6063-T6
3. 16mm Thick Drywall / Plaster / Wall Cladding
(By others)
4. Extruded Elastomeric Membrane
5. Sheet Metal Self Drilling Screw (by others)
6. Continuous Aluminum Glide Plate
Grade 6063-T6



Key to System Features (Corner Application)

1. Continuous Aluminum Frame
Grade 6063-T6
2. Continuous Aluminum Cover
Grade 6063-T6
3. 16mm Thick Drywall / Plaster / Wall Cladding
(By others)
4. Extruded Elastomeric Membrane
5. Sheet Metal Self Drilling Screw (by others)
6. Continuous Aluminum Glide Plate
Grade 6063-T6

