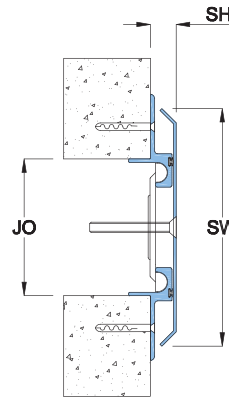


Features

- System designed for gypsum dry wall / curtain wall
- Central plate allows swift shift between positive and negative movements
- For excellent result, choose to powder coat the cover plate to match neighboring wall finish
- System allows full seismic movements
- System allows excellent shear movements
- Suitable for interior / exterior applications
- Vapor and Fire Barriers are optionally available

Straight Application DMS



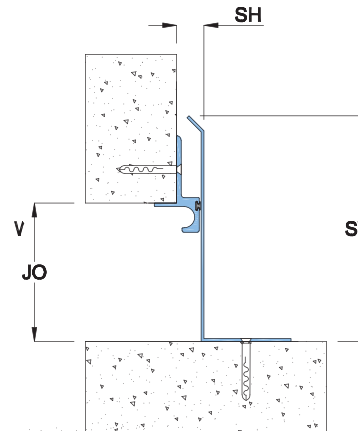
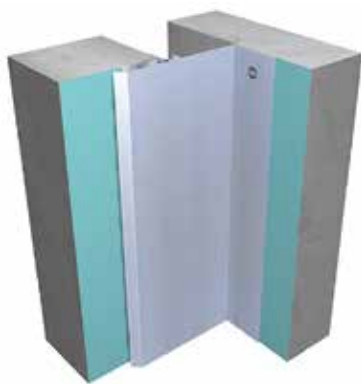
Powder Coat Finish:
Any RALColor



Anodized
Finishes:



Corner Application DMC



DM
Series

EXT.
Application

INT.
Application

Seismic
Movement

WALL
USE

CEILING
USE

ROOF
USE

Corner Application DMC

Details

Usage : Wall/Ceiling/Roof

Joint width : 2"-12"

Optional : Vapor/Fire Barrier

Wider Joint Cover available at request

Application	Code	JO	SH	SW	± Movement (%)			Load (Ton)
					Millimeter			
Straight (S)	DMS 02	51	16	102	50	50	Excellent	*
	DMS 03	76	16	140	50	50	Excellent	*
	DMS 04	102	16	178	50	50	Excellent	*
	DMS 06	152	16	254	50	50	Excellent	*
	DMS 08	203	16	330	50	50	Excellent	*
DMS 12	305	16	483	50	50	Excellent	*	
Corner (C)	DMC 02	51	16	98	50	25	Excellent	*
	DMC 03	76	16	127	50	25	Excellent	*
	DMC 04	102	16	164	50	25	Excellent	*
	DMC 06	152	16	240	50	25	Excellent	*
	DMC 08	203	16	317	50	25	Excellent	*
	DMC 12	305	16	469	50	25	Excellent	*

As Prospec Specialties' policy is one of continual progress for the improvement of the company's services to its customers, the company reserves the right to modify the specifications of its products without notice.