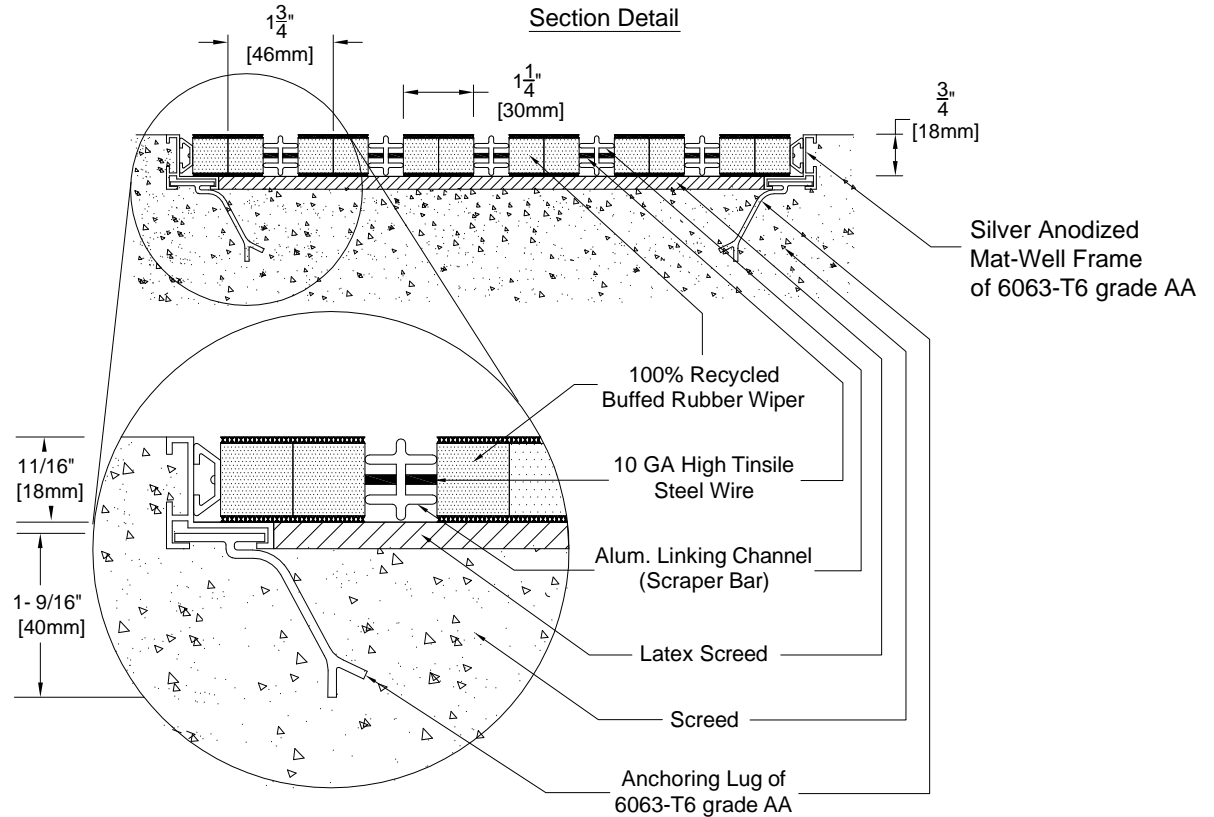
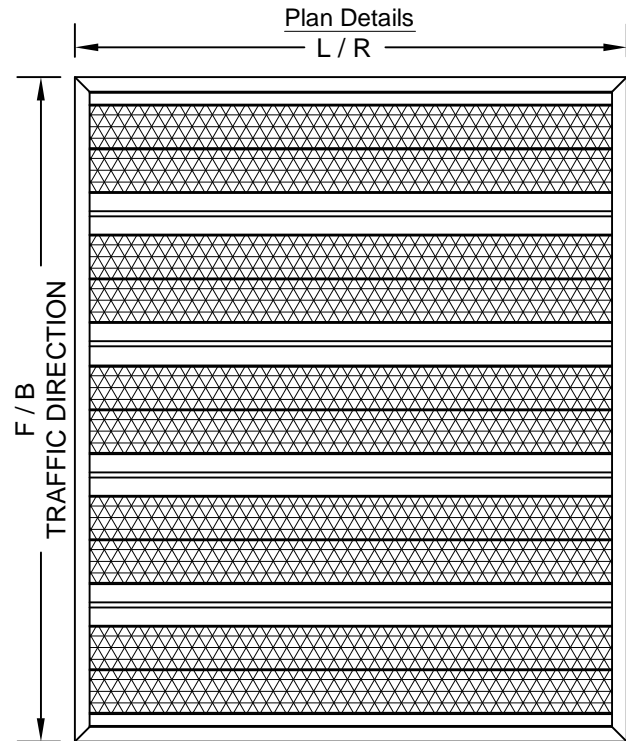



LEVEL BASE FRAME INSTALLATION



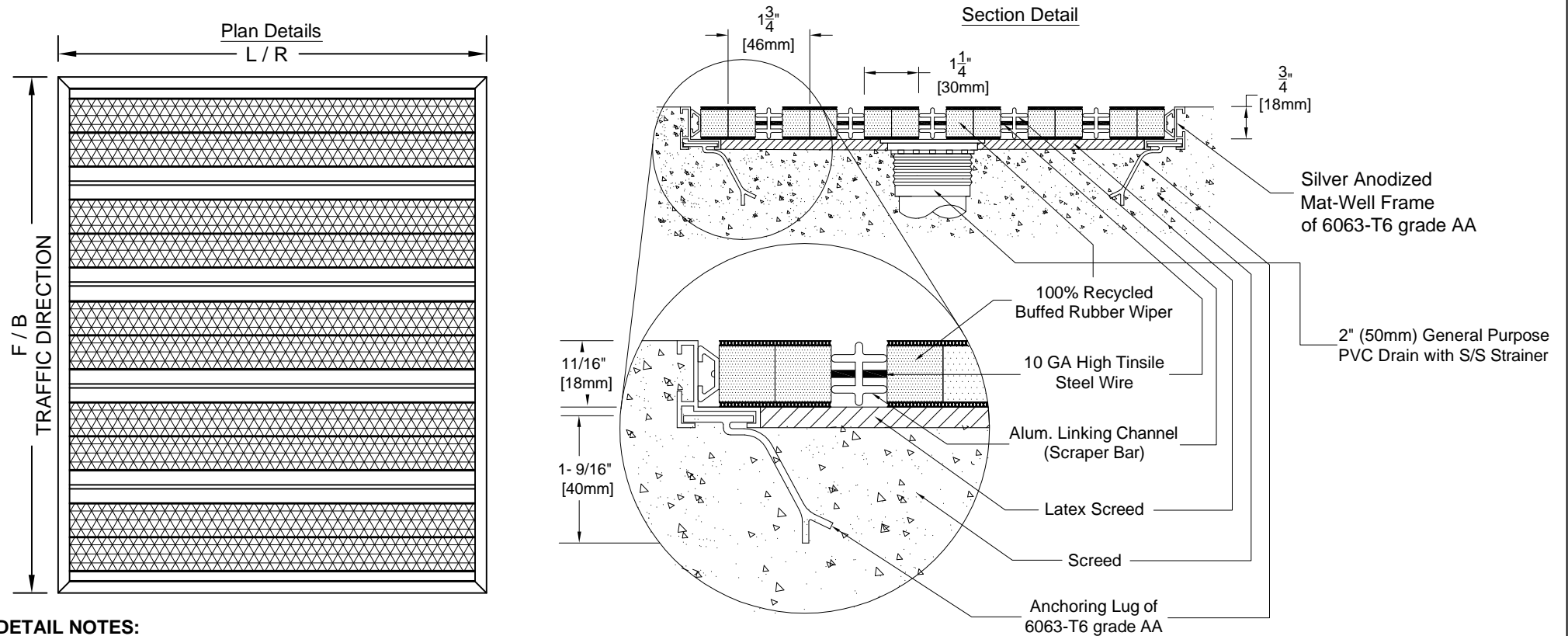
**DETAIL NOTES:**

- 1 - Mat Wipers must run perpendicular to traffic direction.
- 2 - Wipers are available in Grey(GY), Black(BK), Brown(BN) Cognac(CG), Red(RD), Blue(BL), Green(GN).
- 3 - Mat-Well frames available upon request.
- 4 - Installation to be completed in accordance with manufacturer's specifications.
- 5 - All Dimensions are considered true and reflect manufacturer's specifications.

- 6 - Do not scale drawing.
- 7 - Maximum single grid size not to exceed 6.5'(2000mm)left to right X 2'(610mm) front to back
- 8 - Weight 35.27 lbs per Square Meter.
- 9 - Maximum rolling load / wheel, Recessed installation 1500 lbs.
- 11 - All surfaces in contact with masonry are to receive a coat of Zinc Chromate Premier.


PROJECT:		DRAWN BY : SJ	 <b>3601 HIGHWAY 7, SUITE 400</b> MARKHAM ON L3R 0M3, CANADA
CONSULTANT:	MATTING CODE :	CHECKED BY :	
INTERIOR DESIGN:	OFFER NO:	SCALE : NTS	

LEVEL BASE FRAME WITH DRAIN INSTALLATION

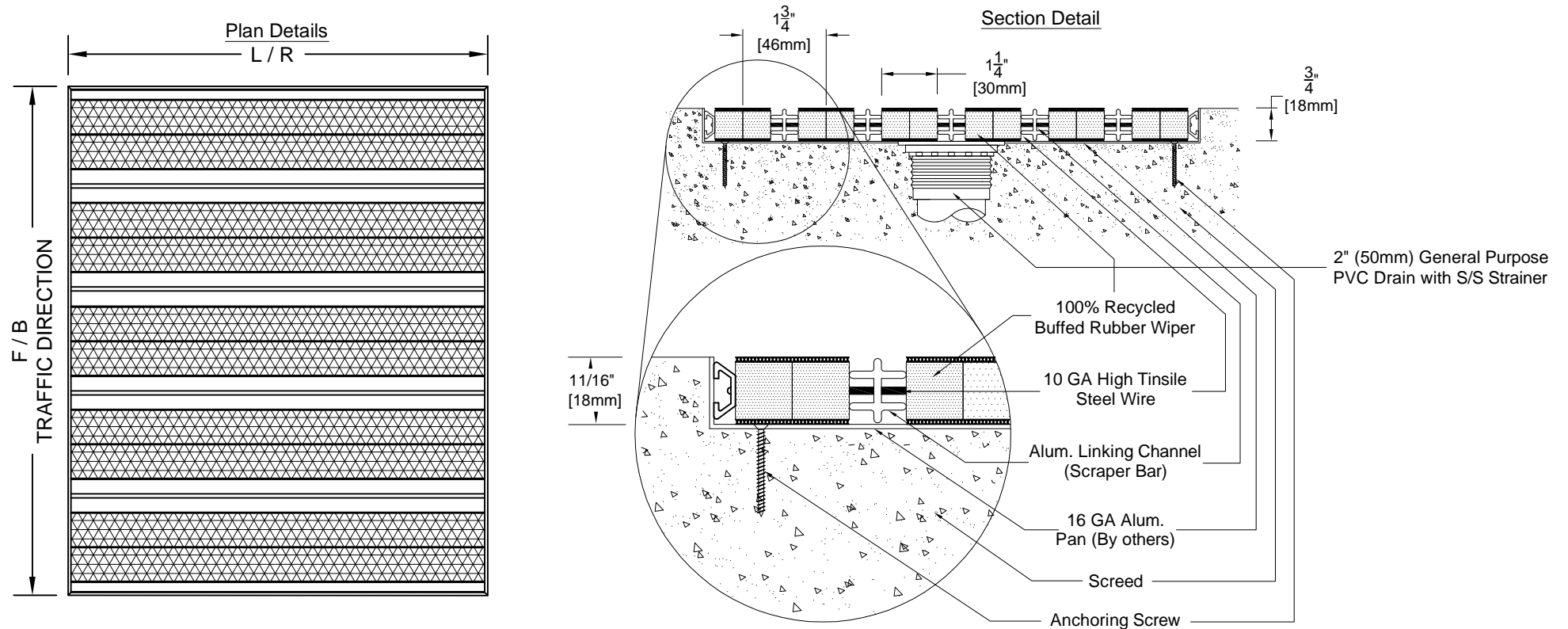


DETAIL NOTES:

- 1 - Mat Wipers must run perpendicular to traffic direction.
- 2 - Wipers are available in Grey(GY), Black(BK), Brown(BN) Cognac(CG), Red(RD), Blue(BL), Green(GN).
- 3 - Mat-Well frames available upon request.
- 4 - Installation to be completed in accordance with manufacturer's specifications.
- 5 - All Dimensions are considered true and reflect manufacturer's specifications.
- 6 - Do not scale drawing.
- 7 - Maximum single grid size not to exceed 6.5'(2000mm)left to right X 2'(610mm) front to back
- 8 - Weight 35.27 lbs per Square Meter.
- 9 - Maximum rolling load / wheel, Recessed installation 1500 lbs.
- 11 - All surfaces in contact with masonry are to receive a coat of Zinc Chromate Premier.

PROJECT:		DRAWN BY : SJ		 <b>3601 HIGHWAY 7, SUITE 400</b> MARKHAM ON L3R 0M3, CANADA
CONSULTANT:	MATTING CODE :	CHECKED BY :		
INTERIOR DESIGN:	OFFER NO:	SCALE : NTS		

LEVEL BASE FRAME WITH DRAIN AND PAN INSTALLATION



DETAIL NOTES:

- 1 - Mat Wipers must run perpendicular to traffic direction.
- 2 - Wipers are available in Grey(GY), Black(BK), Brown(BN) Cognac(CG), Red(RD), Blue(BL), Green(GN).
- 3 - Mat-Well frames available upon request.
- 4 - Installation to be completed in accordance with manufacturer's specifications.
- 5 - All Dimensions are considered true and reflect manufacturer's specifications.
- 6 - Do not scale drawing.
- 7 - Maximum single grid size not to exceed 6.5'(2000mm)left to right X 2'(610mm) front to back
- 8 - Weight 35.27 lbs per Square Meter.
- 9 - Maximum rolling load / wheel, Recessed installation 1500 lbs.
- 11 - All surfaces in contact with masonry are to receive a coat of Zinc Chromate Premier.

PROJECT:		DRAWN BY : SJ	 <b>3601 HIGHWAY 7, SUITE 400</b> MARKHAM ON L3R 0M3, CANADA
CONSULTANT:	MATTING CODE :	CHECKED BY :	
INTERIOR DESIGN:	OFFER NO:	SCALE : NTS	