

**Product and Company Identification**

Product Name: **FA Series**  
 Manufacturer's Name: **Prospec Specialties Inc.**  
 Suite 400, 3601, Highway 7,  
 Markham ON, L3R 0M3, Canada  
 Emergency #: (888) 749-8456  
 Date Prepared: June, 2013

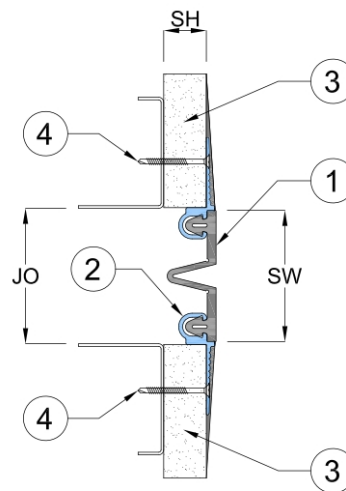
**Table 1: System Details**

Application	Code	JO	SH	SW	± Movement (%)			Load (Ton)
		Millimeter			Horizontal	Vertical	Shear	
Straight ( S )	FAS 01	41	16	43	50	50	Excellent	*
	FAS 02	51	16	52	50	50	Excellent	*
	FAS 03	76	16	78	50	50	Excellent	*
	FAS 04	102	16	103	50	50	Excellent	*
	FAS 06	152	16	154	50	50	Excellent	*
Corner ( C )	FAC 01	41	16	42	50	50	Excellent	*
	FAC 02	51	16	50	50	50	Excellent	*
	FAC 03	76	16	75	50	50	Excellent	*
	FAC 04	102	16	100	50	50	Excellent	*
	FAC 06	152	16	150	50	50	Excellent	*

**JO** = Joint Opening (Wider Joint Cover available at request)  
**SH** = System Height  
**SW** = Sight Width

**Key to System Features (Straight Application)**

1. Continuous Silicone Gasket  
(Design may vary for wider gaps)
2. Continuous Aluminum Surface mounted frame  
Grade 6063-T6
3. Ceiling panel (by others)
4. Self-tapping sheet metal screw  
(by others)



**Key to System Features (Corner Application)**

1. Continuous Silicone Gasket  
(Design may vary for wider gaps)
2. Continuous Aluminum  
Surface mounted frame  
Grade 6063-T6
3. Ceiling panel (by others)
4. Self-tapping sheet metal screw  
(by others)
5. Continuous Aluminum  
Recessed mounted frame  
Grade 6063-T6
6. Concrete Screw (by others)
7. Concrete Wall (by others)

