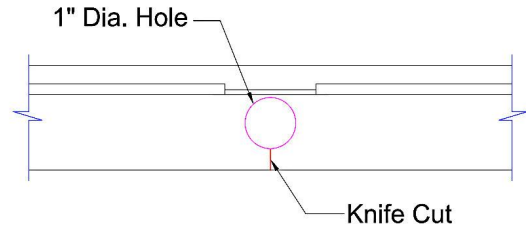


KCS02 Inside Corner Floor to Wall Application

Fig. 1



Section 1:



Section 2:

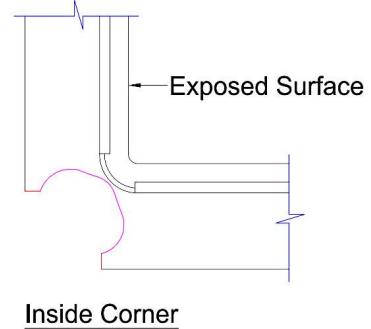
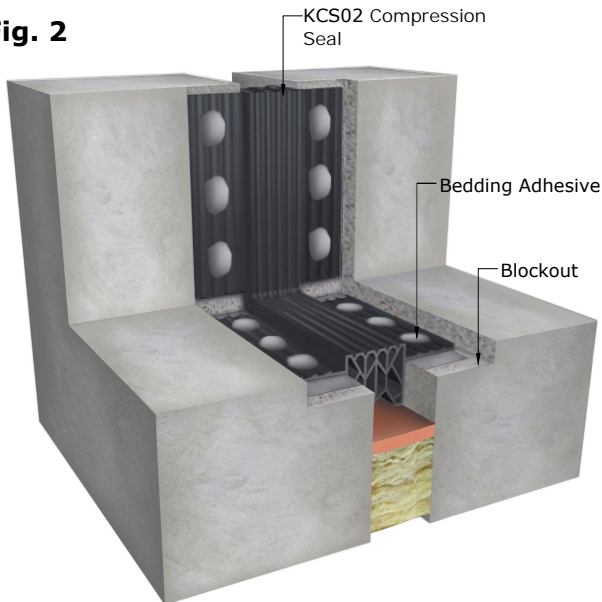


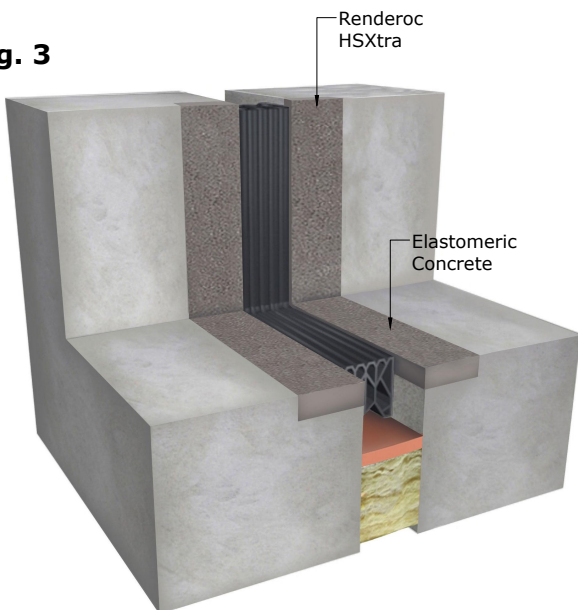
Fig. 2



KCS At Inside corner application, drill a 1" diameter hole through the seal. Using a sharp long blade knife or hacksaw, cut the lower section of the seal (See Section 1). Bend to desire position (See Section 2) and follow manufacturer's standard installation procedure. Ref. Fig. 1 to 3.

NOTE: For all vertical applications instead of using the Wabocrete Elastomeric Concrete, use "Renderoc HSXtra" *Contact your local prospec agent for MSDS & Installation Instructions.

Fig. 3



HAS02 + KCS02 + ZBS02 Systems

